



**ORBITAL**  
- LIFTS LIMITED -

# **Orbital Hydra XL**

**Hydraulic Homelift**



**ORBITAL**  
- LIFTS LIMITED -

## General Features

Normative	Machine directive 2006/42/CE – EN8141
Certified body	IMQ
Loads	300 Kg – 400 Kg - 500 Kg
Power supply	230 V monofase (+/- 5%) - 50/60 Hz - 400 V trifase
Starts per hour	30
Duty cycle	33%
Entrances	Single – Opposite/Side – Triple
Speed	0,15 m/s – (0.30 m/s no CE certification)
Travel (max)	18.5 mt
N° Stops (max)	8
N° Services (max)	8
Minimum travel	0.5 mt
Control panel	EP eprom mother board.
Emergency manoeuvre	In case of black-out, the cabin wil descent to lower floor and open the doors.
Drive	Hydraulic indirect 2:1
Sling	Cantilever

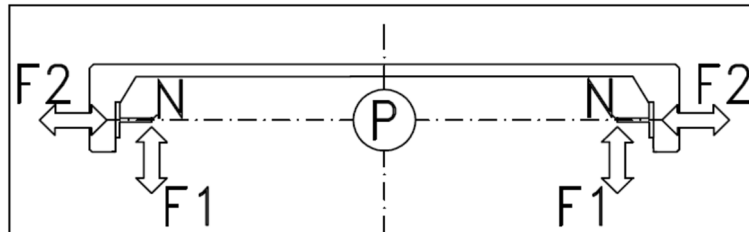
Headroom (mm)			
	cabin height		
	2000	2100	2180
No-cabin door	2150	2300	2400
Foding door	2250	2350	2400
Sliding door	2350	2450	2450

Distance between floors (mm)		
	2000 door opening (H)	
	Swing door	Masonry
Structure		2220
Sliding door	Masonry	2350
	Structure	2410

## Reactions

NU: During normal use  
SGI: Safety gear intervention

P: reaction under the piston  
N: reaction under the guide rails (each)  
F1: Guide rail bracket transversal reaction  
F2: Guide rail bracket longitudinal reaction



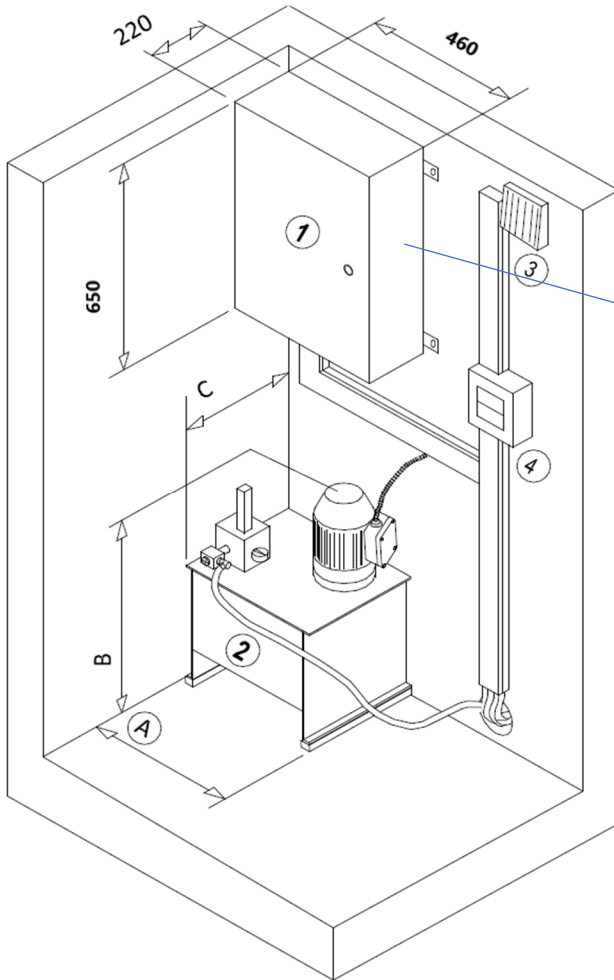
	<b>300</b>		<b>400 – 500Kg</b>	
	NU	SGI	NU	SGI
P	10869	16874	12780	19806
N	1210	8844	1210	10120
F1	1452	2421	1713	2854
F2	250	416	385	642

NB Loads are not simultaneously



**ORBITAL**  
- LIFTS LIMITED -

## Machine room

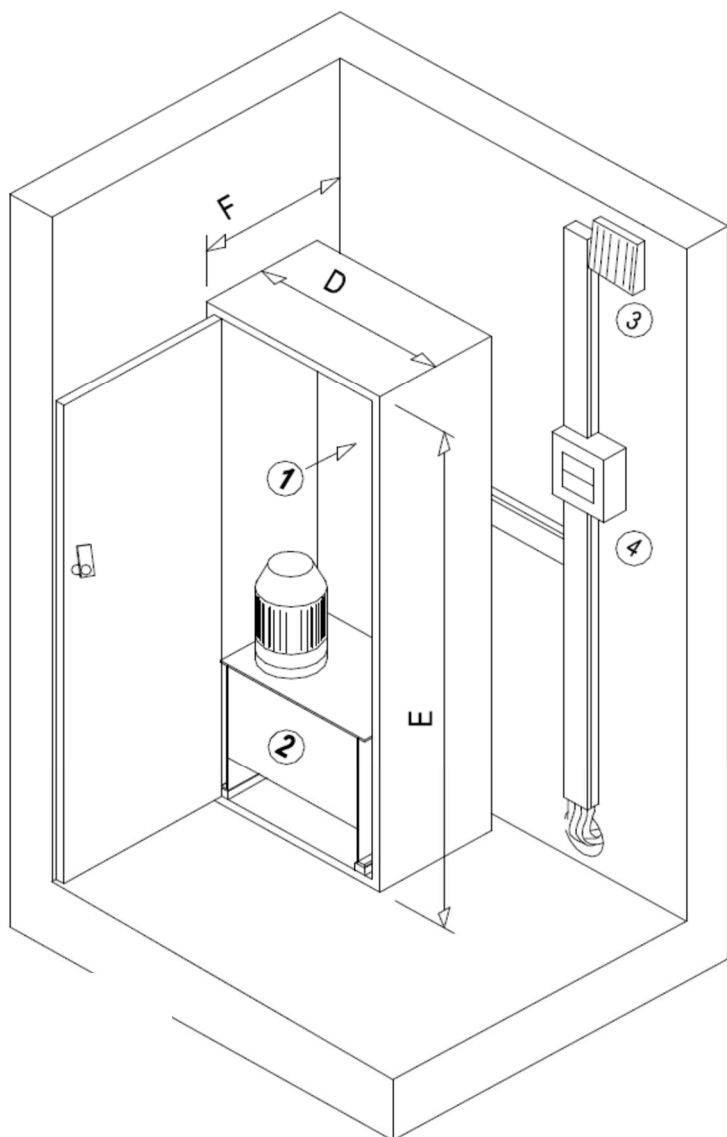


1- Motherboard case  
RAL7035

2 – Pump unit  
3 – Alarm buzzer  
4 – control panel main switch



**ORBITAL**  
- LIFTS LIMITED -

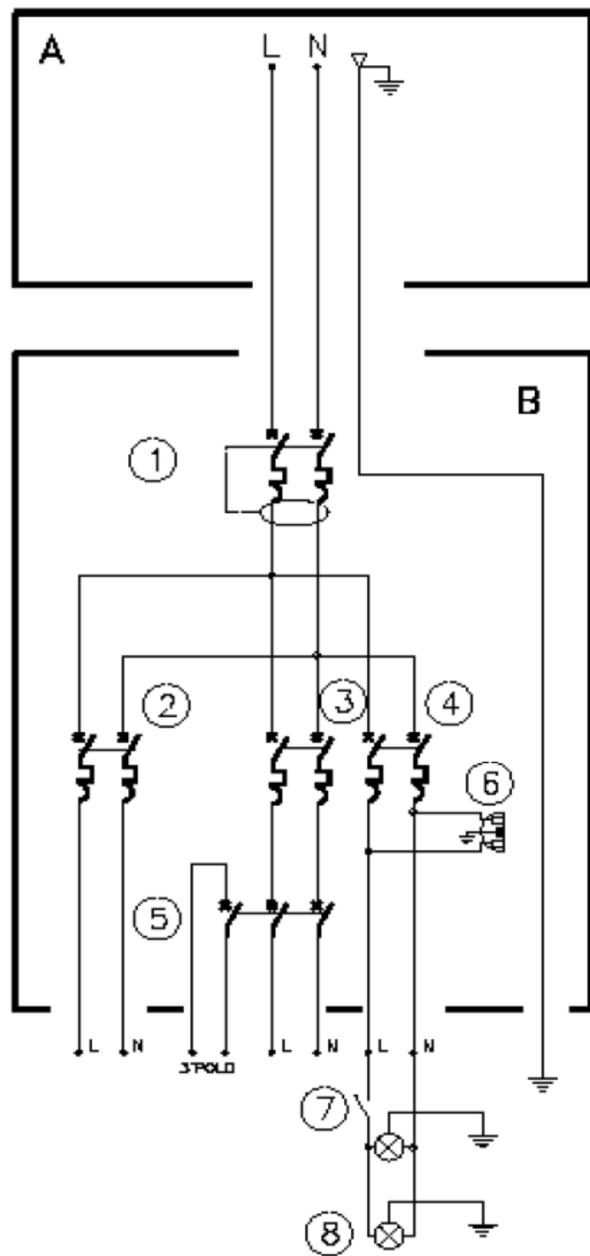
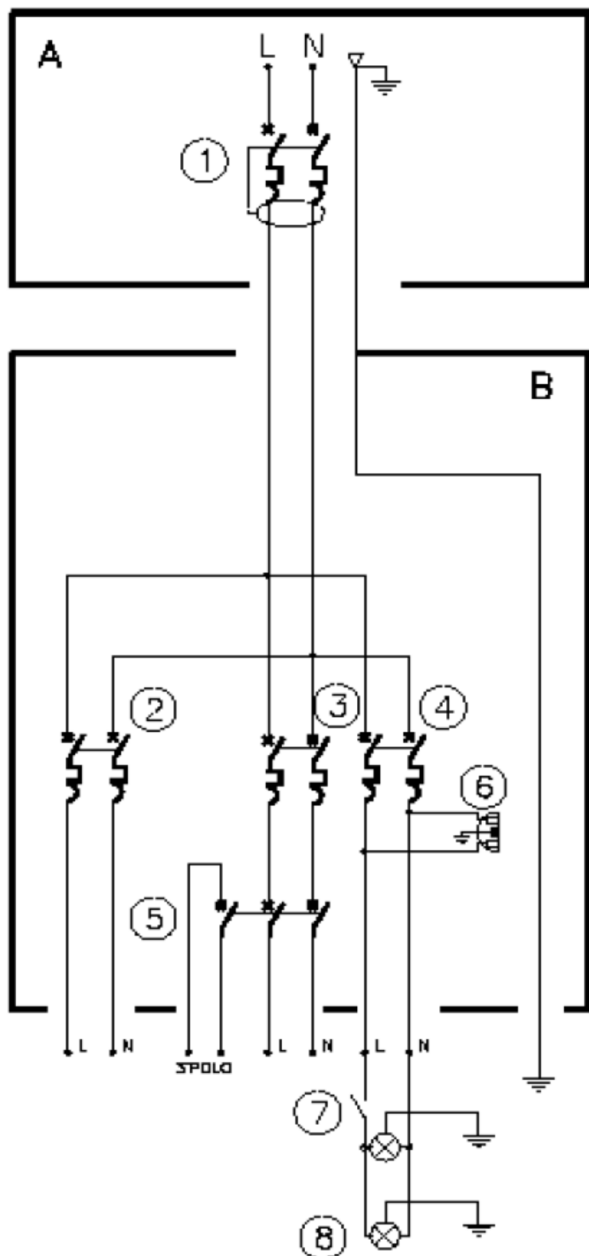


Dimensions:  
D = 770 mm  
F = 420/560 mm  
E = 1650 mm

**Technical cabinet in F12PPS  
skinplate**



**Electric diagram 230V - MONOPHASE**



## Electric diagram 230V - MONOPHASE

### Legenda:

A Breaker

B Power supply board

- 1 - Differential-Magnetothermic switch monophase 2 x 25 A type B, idn 0.03-A\*\*
- 2 - Differential-Magnetothermic monophase for valve heating device 2 x 10A
- 3 - Differential-Magnetothermic switch monophase power supply control panel 2 X \*\*A
- 4 - Differential-Magnetothermic switch 2 x 10A for potential shaft lighting, Machine room and socket 2P+T 10A 230V
- 5 - Breaker 3 poles control panel power supply and emergency enabling contact
- 6 - Socket 2P + T 10A inside the control panel
- 7 - Shaft lighting switches
- 8 - Shaft lighting device (optional)

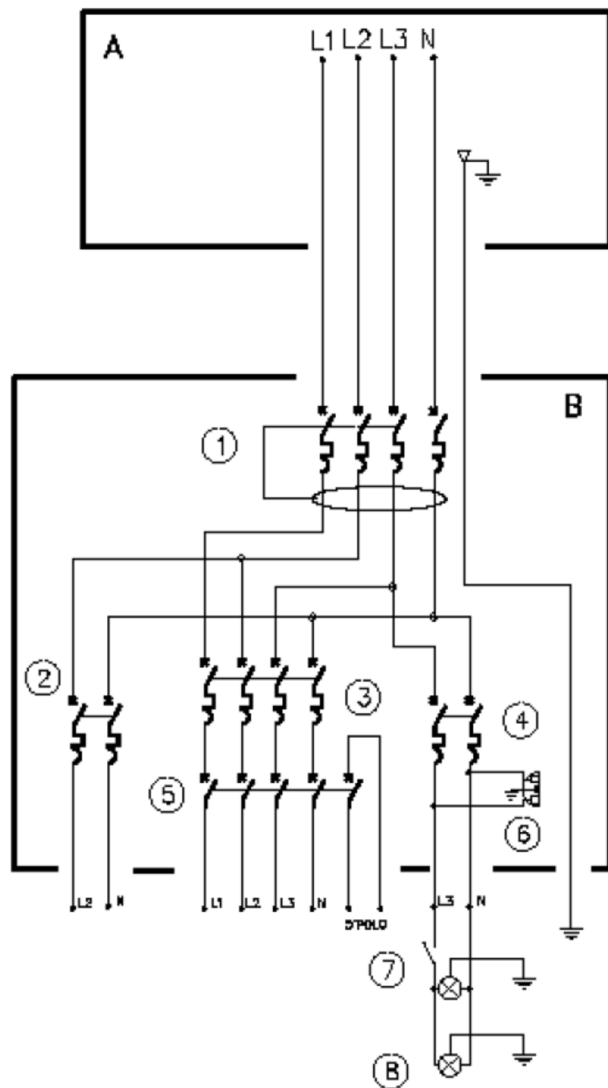
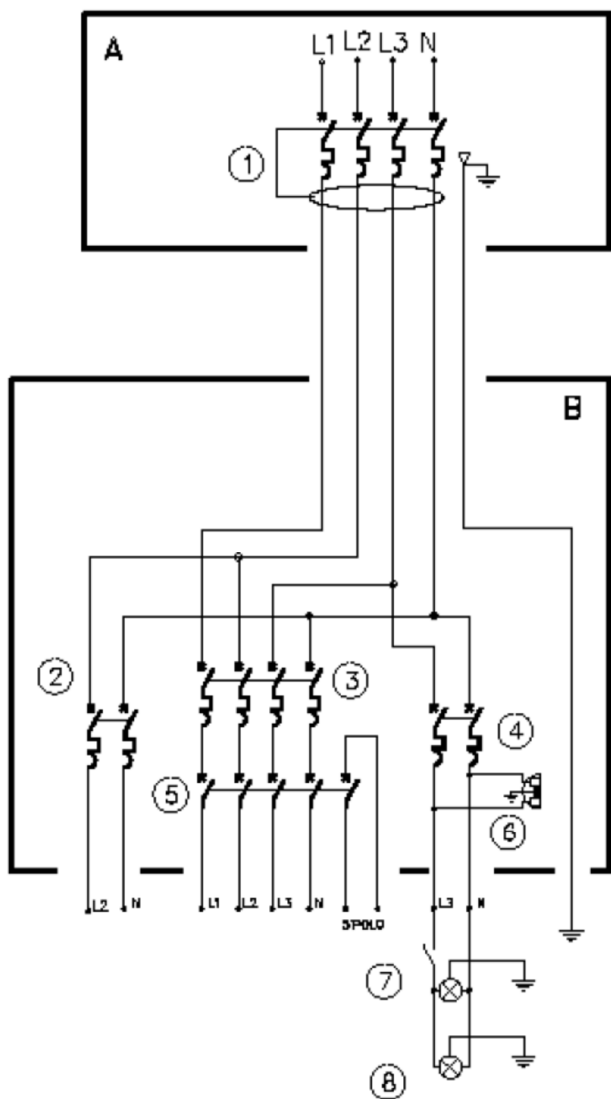
\*\* The size of the breaker has to be evaluated by the installer in function of any additional power absorption caused by eventual devices not provided by the supplier.

**Telephone line:** landline or GSM has to be provided by final user



**ORBITAL**  
- LIFTS LIMITED -

### Electric diagram 400V - THREEPHASE



## Electric diagram 400V - THREEPHASE

### Legenda:

- A Breaker
- B Power supply board

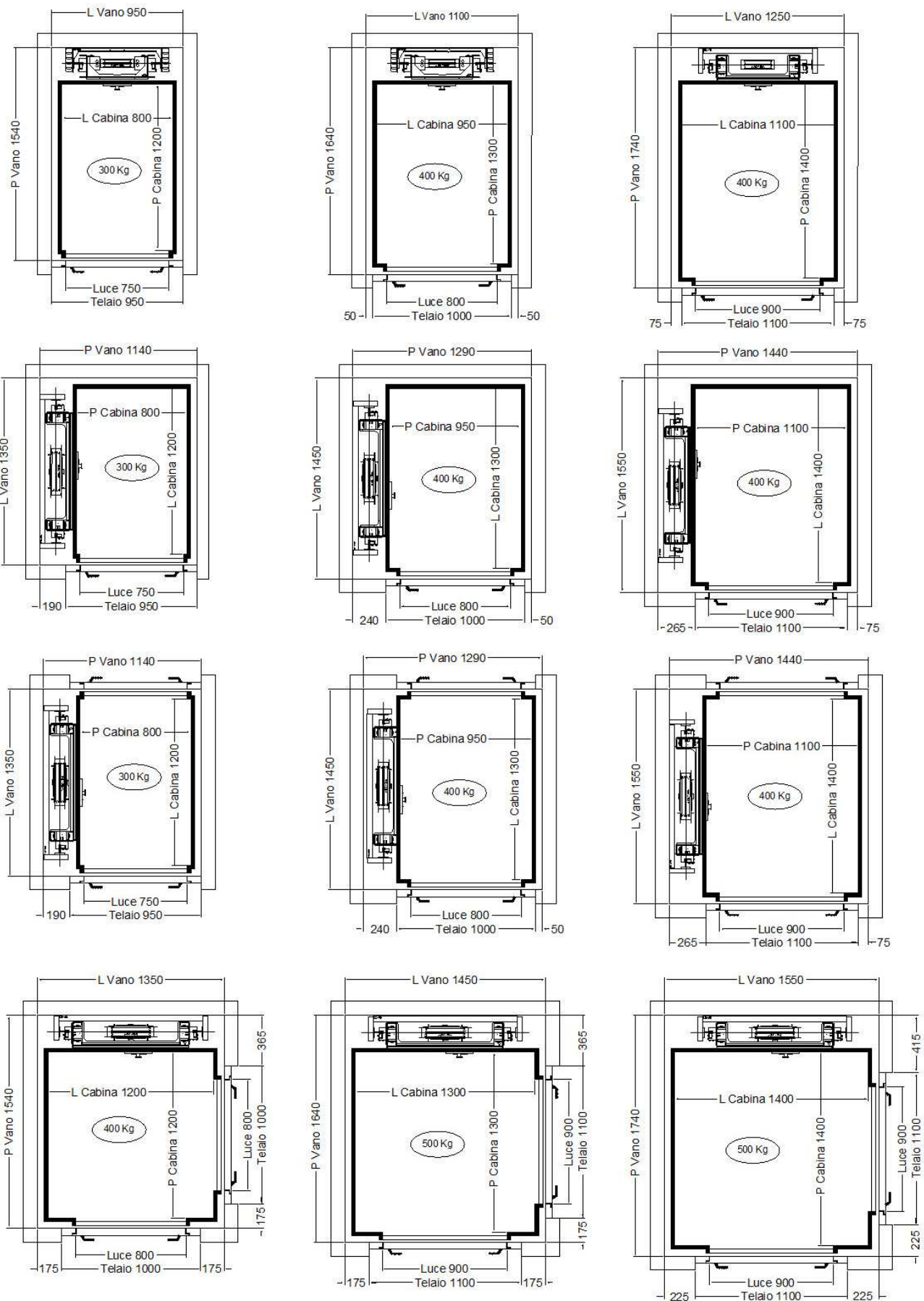
- 1 - Differential-Magnetothermic switch threephase + neutral, 400V - 4 x \*\*A, idn 0.03A
  - 2 - Differential-Magnetothermic monophas for valve heating device 2 x 10A
  - 3 - Differential-Magnetothermic switch threephase + neutral, 400V - 4 x \*\*A for control panel
  - 4 - Differential-Magnetothermic switch 2 x 10A for potential shaft lighting, Machine room and socket 2P+T 10A 230V
  - 5 - Breaker poles control panel power supply and emergency enabling contact
  - 6 - 2P+T 10 A - 230V sockets in the shaft \*\*
  - 7 - Shaft lighting switches
  - 8 - Shaft lighting device (optional)
- \*\* The size of the breaker has to be evaluated by the installer in function of any additional power absorption caused by eventual devices not provided by the supplier.

**Telephone line:** landline or GSM has to be provided by final



**ORBITAL**  
- LIFTS LIMITED -

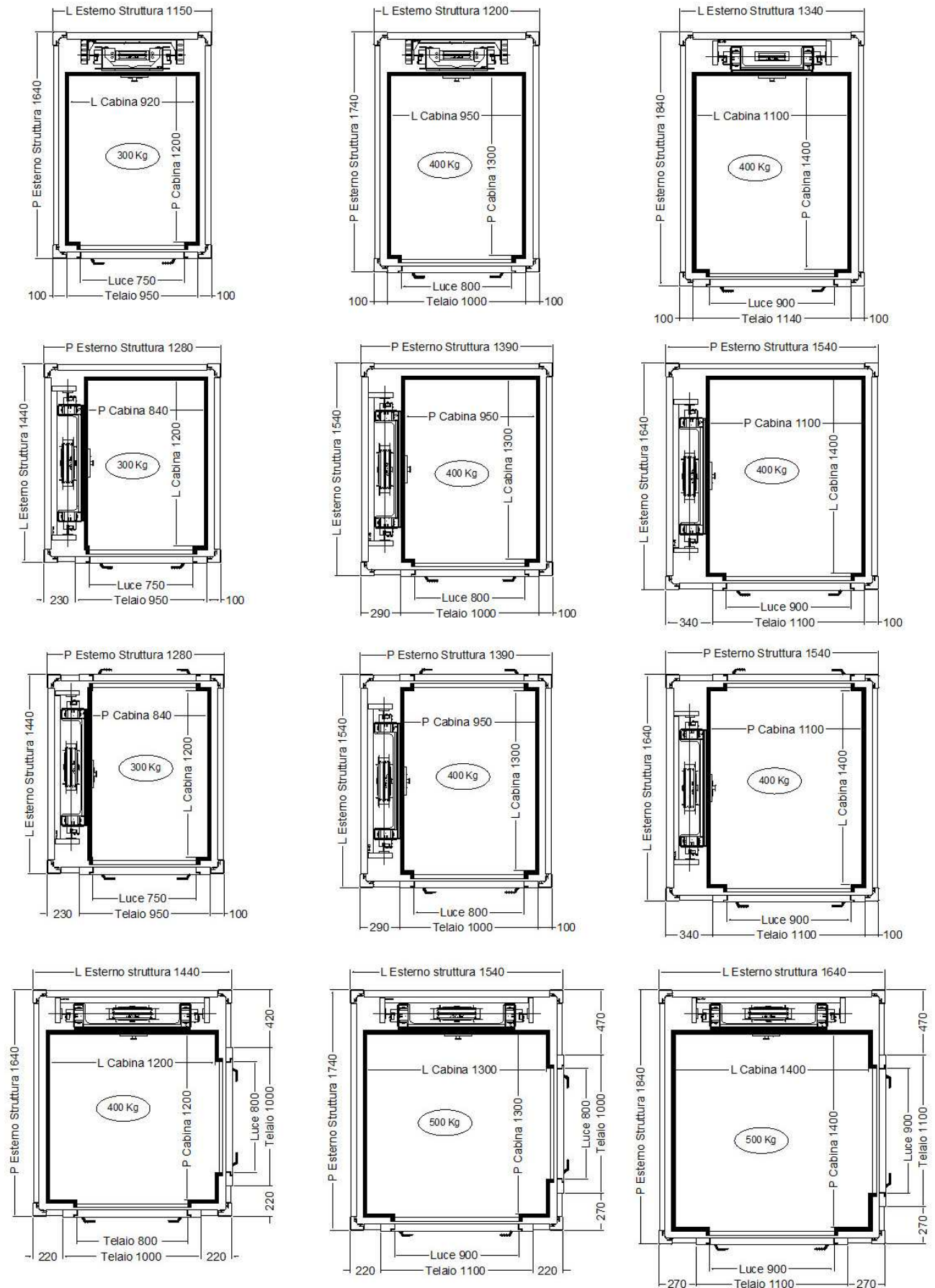
## Masonry shaft – Swing door





**ORBITAL**  
- LIFTS LIMITED -

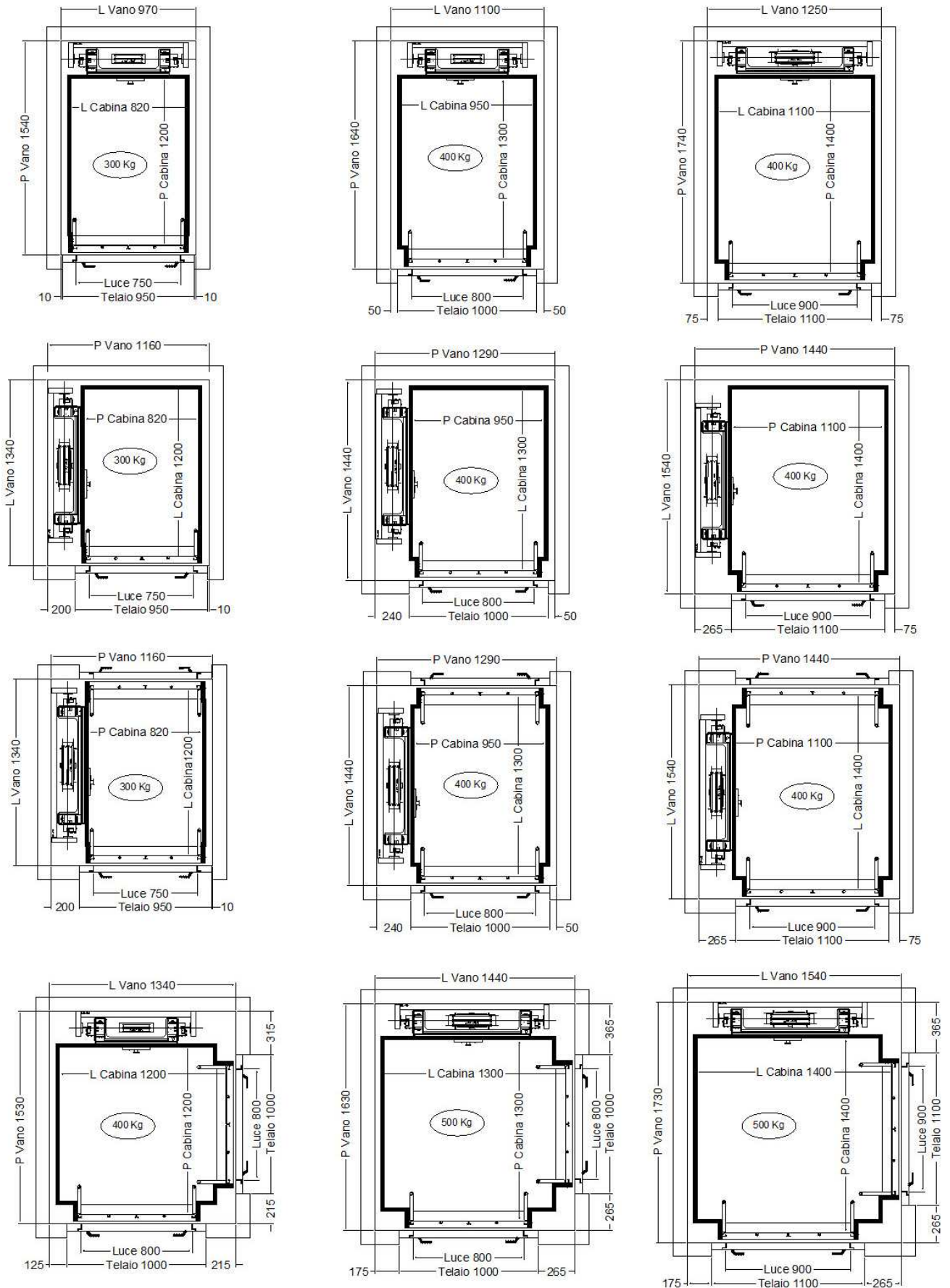
## Structure – Swing door





**ORBITAL**  
- LIFTS LIMITED -

## Masonry shaft – Folding door + Swing door





**ORBITAL**  
- LIFTS LIMITED -

## Strcuture – Folding door + swing door



Masonry shaft – Sliding door 2 panel



EST 2008  
**ORBITAL**  
- LIFTS LIMITED -



Masonry shaft Sliding door 2 panel



**ORBITAL**  
- LIFTS LIMITED -



**Masonry shaft - Sliding door 3 panel**



**ORBITAL**  
- LIFTS LIMITED -





**ORBITAL**  
- LIFTS LIMITED -





# **ORBITAL**

**- LIF S LIMITED -**